

ADVANCED FRAMING LUMBER

100% Usable • Wane-Free Edges • Dimensional Stability • Straight • Longer Spans
Strong • Light Weight • Easy to Nail • Green Solution • Lifetime Limited Warranty

Available in 1½" x 3½", 5½", 7¼", 9¼", 9½", 11¼", 11⅞", 14", and 16" depths

WALLS

Wall Studs & Columns

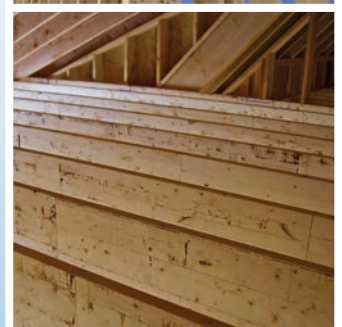
Long, straight, and strong onCENTER AFL is ideal for tall wall and cabinet wall applications to ensure fast and easy installation of sheathing and wall finishes



FLOORS

Floor Joists & Beams

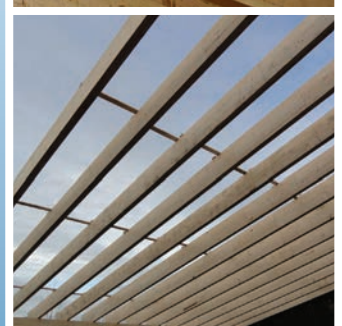
Available in lengths up to 32', onCENTER AFL is the perfect option for floor systems where an engineered alternative to solid sawn lumber is desired



ROOFS

Roof Rafters

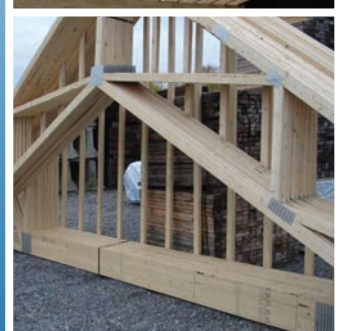
Often eliminating the need for splices and intermediate bracing, long length onCENTER AFL is the rafter choice for stick-framed roof systems



TRUSSES

Truss Chords

onCENTER AFL is ideal for attic truss bottom chords: 1½" thick, 11⅞" & 14" depths to match I-joists, lengths up to 32', easy plate embedment. Reduce plate count, avoid ripping lumber



Allowable Stress Value Comparison (psi)

Product	Modulus of Elasticity ^a E	Bending ^b F _b	Compression Parallel to Grain ^c F _c	Tension Parallel to Grain ^d F _t	Compression Perpendicular to Grain F _{c⊥}	Horizontal Shear F _v
onCENTER 1.6E AFL	1.6 x 10 ⁶	1200	1600	900	425	135
onCENTER 1.7E AFL	1.7 x 10 ⁶	1800	1925	1350	595	180
onCENTER 1.9E AFL	1.9 x 10 ⁶	2300	2190	1540	675	205
onCENTER 2.1E AFL	2.1 x 10 ⁶	2300	2660	1880	675	250
HF #2	1.3 x 10 ⁶	850	1430	525	405	150
SYP #2	1.4 x 10 ⁶	750	1400	450	565	175
SPF #2	1.4 x 10 ⁶	875	1265	450	425	135
DFL #2	1.6 x 10 ⁶	900	1485	575	625	180
1.3E LSL	1.3 x 10 ⁶	1700	1835	1075	710	425
1.5E LVL	1.5 x 10 ⁶	2250	1950	1255	750	230

a. Values for onCENTER AFL and LSL are shear-free.

b. For 12" depth.

c. For 5½" depth.

d. For 12" depth. AFL and LVL values appropriate for length up to 24'.

- onCENTER® AFL is one of the **Greenest Building Solutions** available
 - Raw material used to produce onCENTER AFL is sourced only from forests harvested on a sustainable yield basis and managed under accreditations from the following organizations: ISO 14001, CSA Z 809, SFI or FSC (FSC credits are available on request)
 - Small dimension, low-graded coniferous species are transformed into a stronger, higher quality end product
 - All mill waste is either re-used in the water-free production process or recycled into wood pellets
 - Lumber is dried with innovative, low energy dryers powered by electricity generated from renewable bio-fuels
- onCENTER AFL provides deep depths necessary to meet stringent insulation requirements in cold climates
- onCENTER AFL studs can be drilled and notched using criteria similar to the code-allowed criteria for dimension lumber*
- Unlike I-joists and plated wood trusses, onCENTER AFL in depths of 9¼" and greater can be used in floor assemblies that would otherwise require a protective membrane or sprinkler system per the 2012 IRC (R501.3) and 2015 IRC (R302.13). That means there are no additional costs associated with fire sprinklers, drywall installation, or chemical applications.

* Refer to the onCENTER AFL Residential Floor & Roof Systems Product Guide and Wall Systems Product Guide for more information.



BlueLinX Corporation
4300 Wildwood Parkway
Atlanta, GA 30339
1-877-914-7770
www.buildonCENTER.com

